



DFG

# DFG-Funding modalities

## - Agricultural Science, Forestry and Veterinary Medicine in Germany

Dr. Patricia Schmitz-Möller, DFG Head Office, Life Science

# Joint activities of the DFG, FNI and NSTC

## In the Field of Agricultural Sciences

October 2016 – ZAMBIA SCIENCE CONFERENCE, 2016  
Zambia, Lusaka

November 2016 GRC/FNI-SGCI MEETINGS,  
AFRICA WEEK, Mozambique, Maputo

July 2017 Trilateral Workshop on socio-ecological demands  
in Agricultural Systems in Mozambique and Zambia, in  
Germany, Bonn

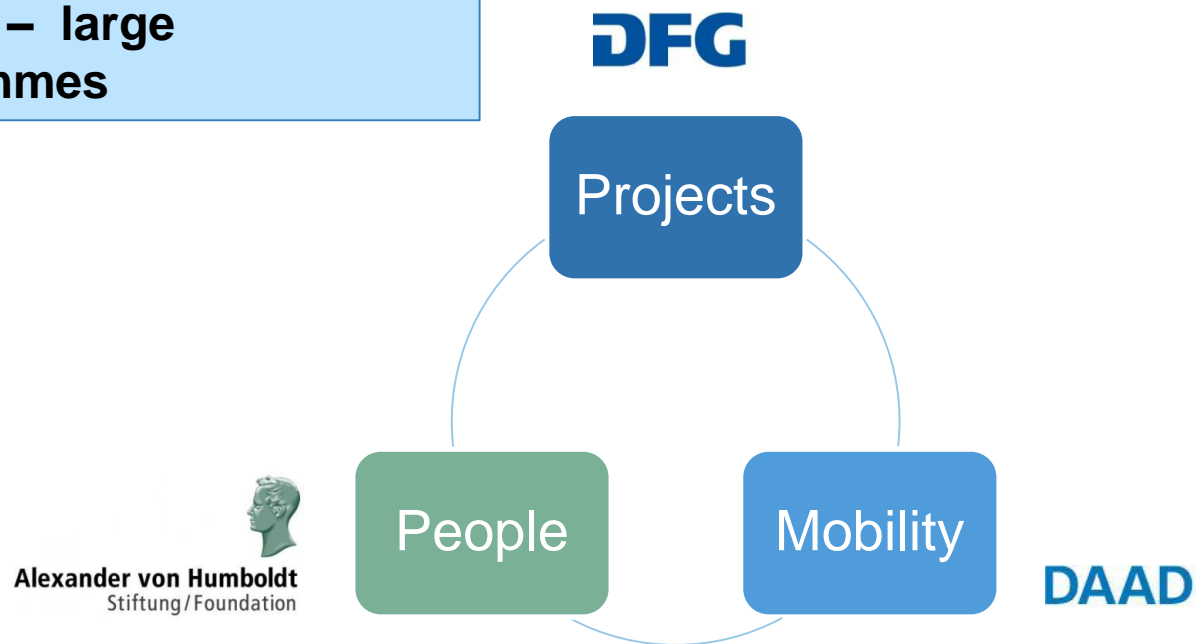
***Aim: Joint call between the three funding organisations***



# The German Research Landscape

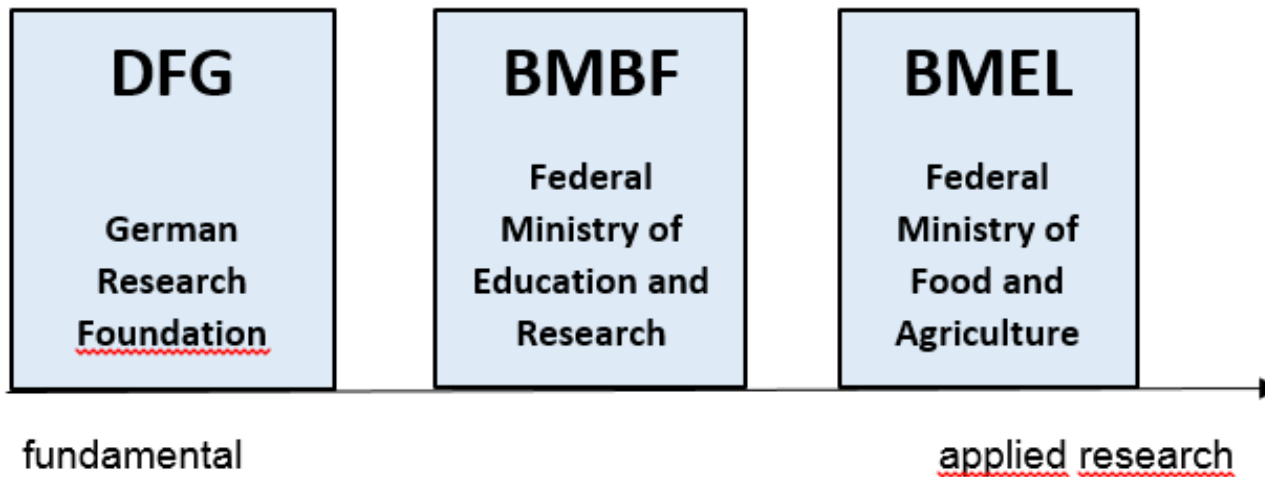
## Main Research Granting Organisations

**B M B F / B M Z**  
**B M E L – large**  
**programmes**



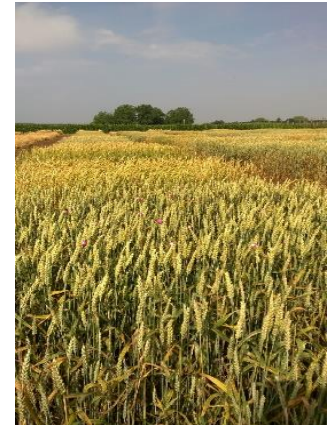
# German Funding Sponsors of Agricultural Science, Forestry and Veterinary Medicine

funding sponsors



# Relevant Research Institutions in Germany

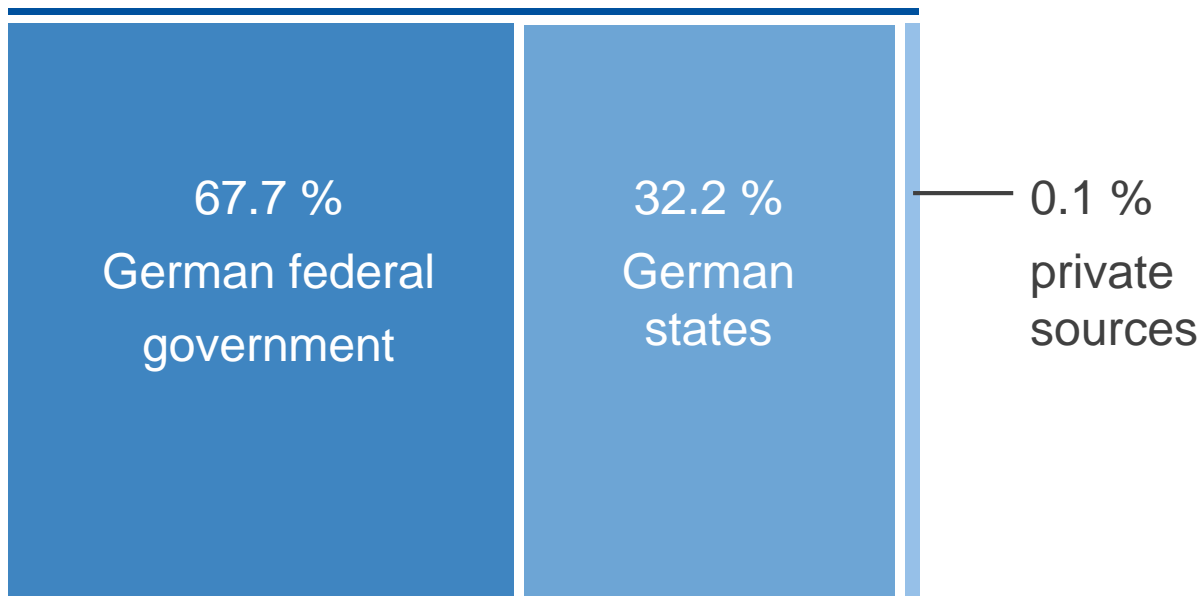
- ▶ Several universities and universities of applied sciences
- ▶ Non-university research institutes of the Max-Planck-Society, the Leibniz Association and the Helmholtz Association, like Max Planck Institute for Plant Breeding Research or Max Planck Institute of Plant Physiology, Golm
- ▶ Federal research institutions funded directly by federal ministries : e.g. the Federal Ministry of Food and Agriculture (BMEL), Federal Ministry of Education and research (BMBF) or Federal Ministry for Economic Cooperation and Development (BMZ)



# The DFG – About Us

## Our budget

The DFG budget totalled approximately **€ 3 billion** in 2016.



# What does the DFG fund?

## The DFG as a customer-friendly funding organisation

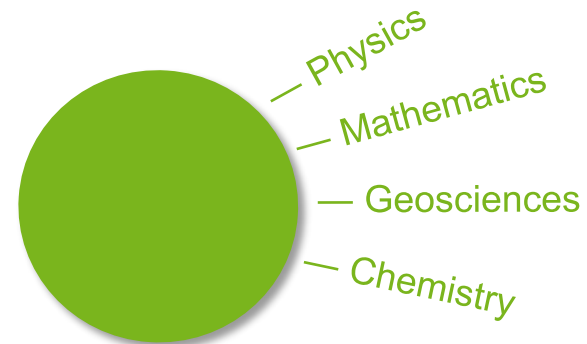
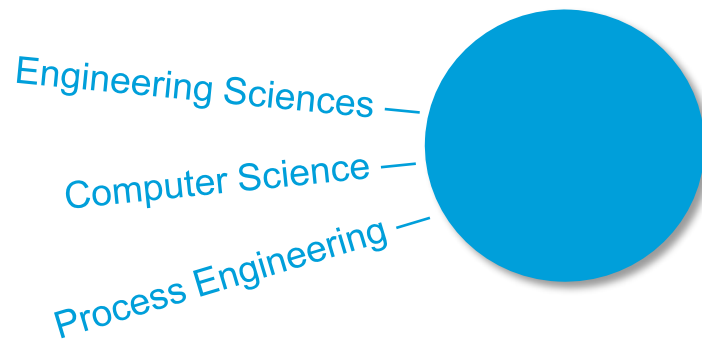
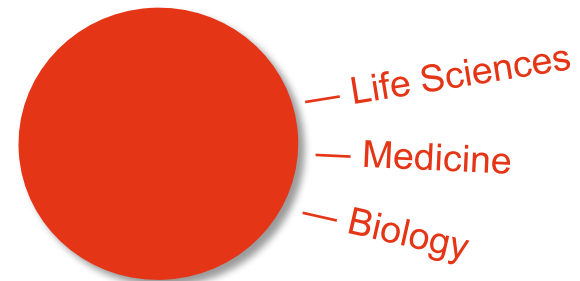
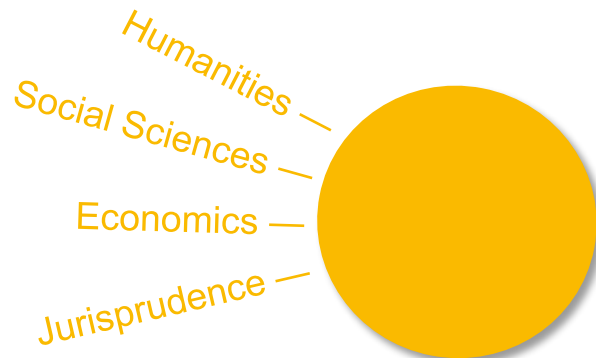
**The DFG is the largest self-governing funding organisation for basic research in Germany and in Europe**

### **The DFG funds**

- ▶ individual projects
- ▶ coordinated research projects
- ▶ research infrastructure
- ▶ scientific contacts

# The DFG – About Us

## Subject areas





# DFG Funding Opportunities

## Eligibility



### Researchers

- ▶ who have completed their scientific training, i.e. who hold a **doctorate** and
- ▶ who would like to work **in Germany**
- ▶ of **any age**

# What are the DFG's selection criteria?

DFG reviewers judge proposals according to

- ▶ Projects are exclusively selected for science-driven reasons and according to scientific criteria:
- ▶ scientific quality of the project
- ▶ applicants' qualifications
- ▶ aims and work programme
- ▶ employment opportunities
- ▶ planned allocation of funding
- ▶ quality and added value of cooperation
- ▶ programme-specific criteria



} in coordinated programmes

# Possibilities to enhance international cooperation

- **TWAS-DFG Cooperation Visits Programme**

Application by young researchers from sub-Saharan African countries not more than 5 years after PhD:

<http://twas.org/opportunity/twas-dfg-cooperation-visits-programme>

- **Currently there is a call for proposals!**

- **Initiation of International Cooperation**

Application by German researchers!

[http://www.dfg.de/en/research\\_funding/programmes/international\\_cooperation/initiation\\_international\\_collaboration/index.html](http://www.dfg.de/en/research_funding/programmes/international_cooperation/initiation_international_collaboration/index.html)

# Possibilities of joint projects

- Most common: Funding of joint research in **Individual Research Grants** programme: The German applicants can request for a certain amount of funds for their African partner(s) in the project according to the rules for projects involving cooperation with developing countries
- However: The national funding organisations in Africa may also have financial opportunities to support the African partner
- Bilateral or multilateral calls by the different funding organisations

# DFG Funding Opportunities

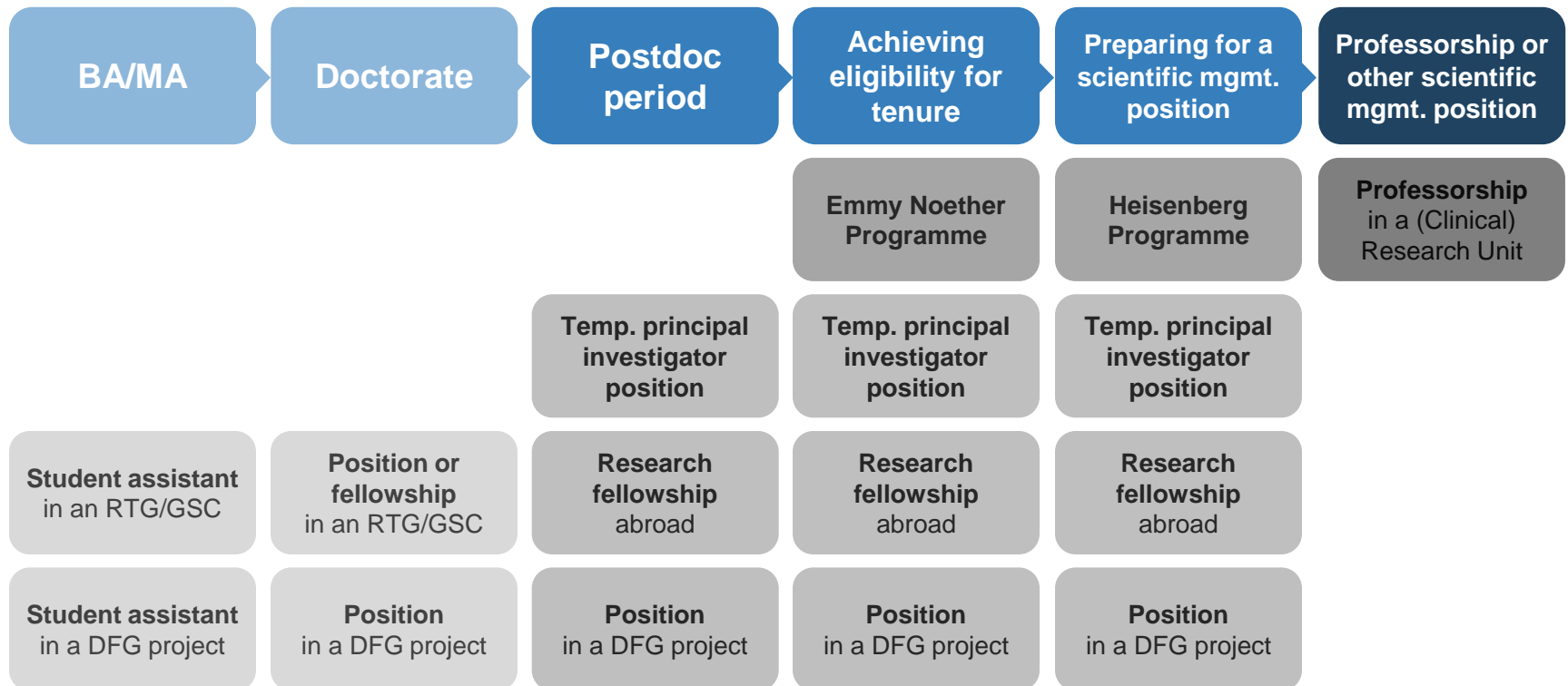
## Working in a DFG-funded project

- ▶ Positions for **doctoral researchers** and **postdocs**
- ▶ At a German university or research institute
- ▶ **Duration** of funding depends on project
- ▶ **Position** (E13-E14 TvöD/TV-L)
- ▶ **Apply with the project's PI**



# DFG Funding Opportunities

## For early career researchers



# Find a German Cooperation partner on GEPRIS

Find DFG-granted research projects on <http://gepris.dfg.de/>

[DFG Homepage](#) → [Disclaimer / Copyright](#) | [Help](#) | [Data Monitor](#) [Deutsch](#)

**DFG** Deutsche Forschungsgemeinschaft

**GEPRIS**  
Geförderte Projekte der DFG

[Search](#) | [Catalogue](#) | [People Index](#) | [Location Index](#) | [About GEPRIS](#)

## Welcome to GEPRIS

GEPRIS (German Project Information System) is an online database made available by the DFG to provide information on current DFG-funded research projects. Please note that to date, project information is available mainly in the German language.

**Search**

**Direct search**

[Projects](#) | [People](#) | [Institutions](#)

Your search keyword  [Find](#)

[→ My Last Queries](#) [→ Advanced Search](#)

Use the GEPRIS standard search to find a certain keyword. You can also enter several words for an AND search. To include all entries, search for both the German as well as the English term or use the catalogue search.

**Projekt**

**Regeneration in an Ethiopian montane forest with special emphasis on tree biology and nurse-tree functions**

**Applicant:** → [Professor Dr. Erwin Beck](#)  
Universität Bayreuth  
Fachgruppe Biologie  
Lehrstuhl Pflanzenphysiologie

**Subject Area:** Forestry

**Funding:** Funded from 2004 to 2012

**Project Description**

In the Munessa-Sheshamene region (Ethiopia) several plots of moderately disturbed natural forest and of exotic tree plantations have been investigated with respect to water relations and photosynthetic capacity of selected indigenous and exotic trees. This ongoing work is part of an ecosystem study conducted by soil scientists, geobotanists and plant ecophysiologicalists that aims at a scientific basis for a sustainable management of the Munessa forest as a model for other semideciduous forests of Ethiopia. The work shall be continued in two working packages, one of which will investigate the so-called nurse-tree effect. Juveniles of indigenous trees developing from seeds that accidentally arrived in a plantation of *Eucalyptus saligna*, *E. globulus* or *Pinus patula* grow significantly faster under the shelter of these "nurse-trees" than in a natural forest. This unexpected nurse-tree effect will be studied in plantations with a successful regeneration of indigenous trees. In the second working package, regeneration ecology of important indigenous tree species will be studied, comprising modes of regeneration, regenerative capacity and the effective regeneration success under natural and plantation situations.

**DFG Programme:** Research Grants

**International:** Ethiopia

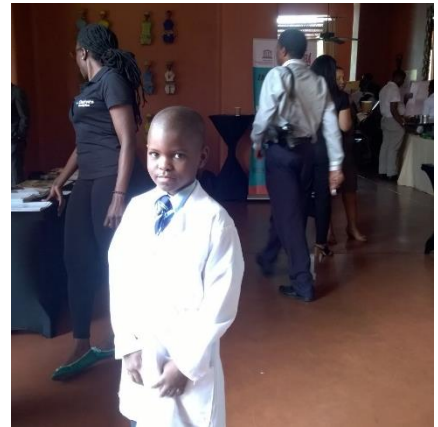
**Connection:**

**Participating Person:** → [Professor Dr. Mesresha Fetene](#); → [Dr. Demel Tekehtay, Ph.D.](#)

# Funding opportunities for young researchers

- ▶ There are various opportunities for young scientists to work in Germany:

Research in  
Germany  
  
Land of Ideas



- ▶ <https://www.research-in-germany.org/en/jobs-and-careers/info-for-postdocs-and-junior-researchers.html>